

THE HURONTARIO/ MAIN STREET CORRIDOR



UPTOWN MISSISSAUGA: MAJOR NODE



Eglinton Ave West

Hurontario

PINNACLE UPTOWN

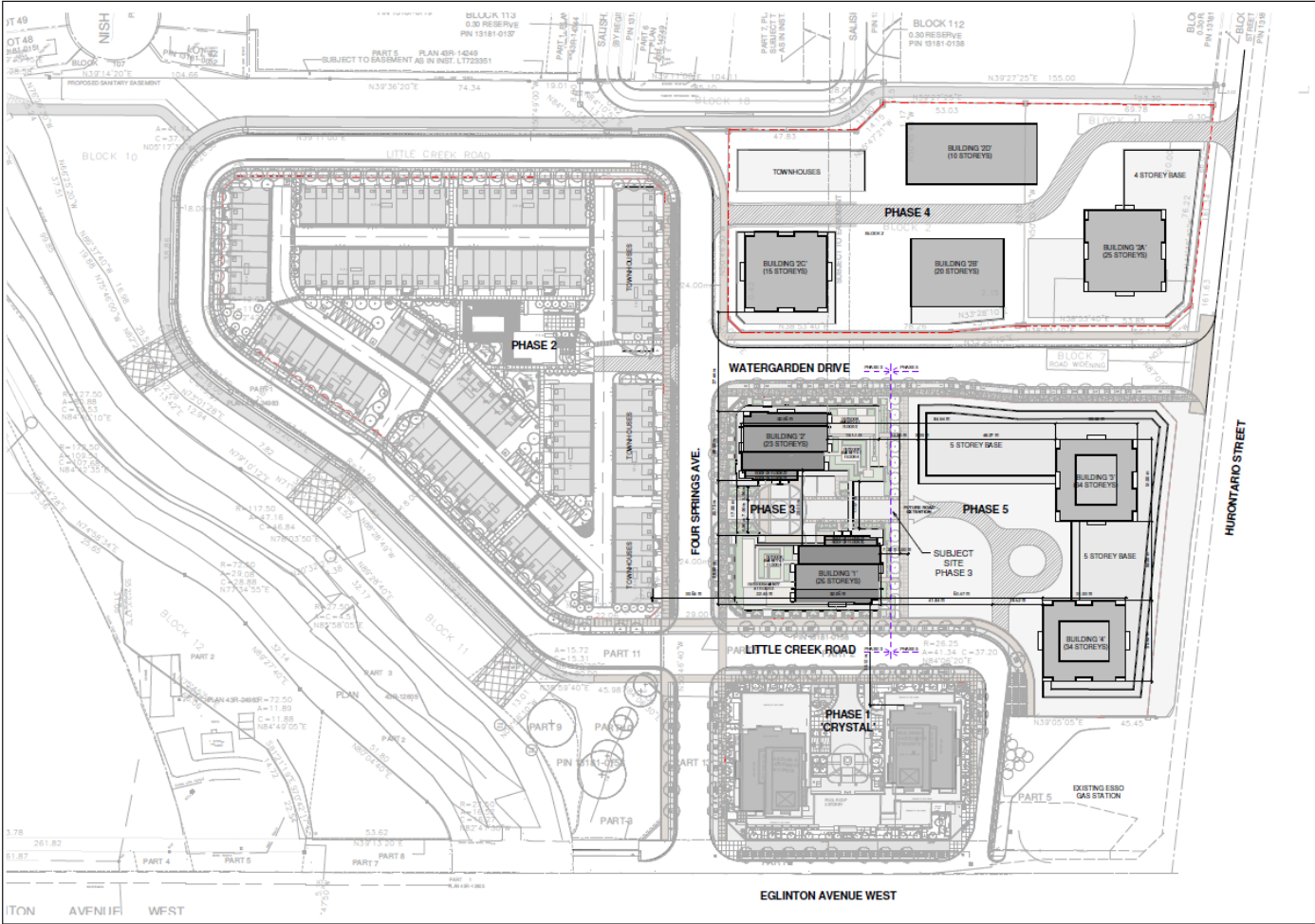


PROJECT OVERVIEW

- **THE SITE IS 36.5 ACRES**
- **15 ACRES WILL BE DEDICATED TO THE CITY AS PARK LAND**
- **WILL FEATURE A VARIETY OF HIGHRISE, MIDRISE, TOWNHOMES, RETAIL AND COMMERCIAL DEVELOPMENT**
- **CURRENTLY APPROVED FOR 2500 DWELLINGS**
- **10 BUILDINGS AND 100 TOWNHOMES**



PINNACLE UPTOWN- SITE PLAN



Crystal



- **2 TOWERS (28 & 24 STOREYS)**
- **463 SUITES**
- **OCCUPANCY- OCTOBER 2014**

- **2 STOREY- GARDEN HOMES**
 - 1063-1585 Sq Ft
- **TYPICAL FLOOR PLATE**
 - 572-926 Sq Ft
- **PENTHOUSES**
 - 1375-1804 Sq Ft



THE MARQUEE TOWNHOMES



THE MARQUEE TOWNHOMES



PINNACLE UPTOWN & THE TRANSIT CORRIDOR

- **TRANSIT SUPPORTIVE DEVELOPMENT**
- **ANIMATES THE STREET TO SUPPORT TRANSIT AND PEDESTRIAN ACTIVITY**
- **PROVIDES FOR EFFICIENT PERMEABILITY AND CONNECTIVITY FOR PEDESTRIANS**
- **THE DEVELOPMENT WILL SUPPORT THE LRT LINE INITIATIVE ALONG HURONTARIO**
- **HOLDING PROVISIONS ON THE BUILDINGS ALONG HURONTARIO UNTIL STUDIES HAVE BEEN COMPLETED**

LET'S MAKE THE TRANSIT VISION A REALITY

