

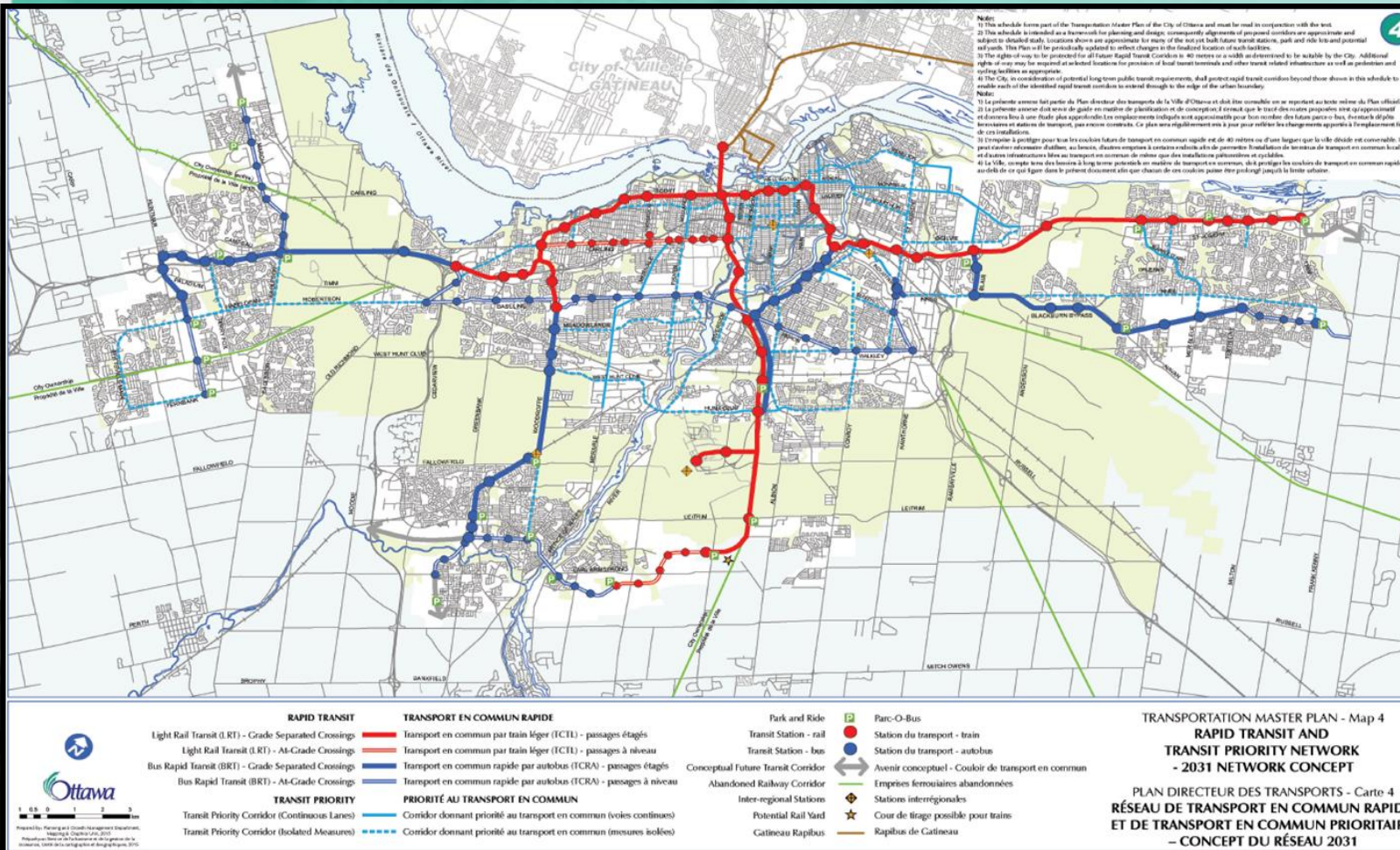


# **LIGHT RAIL TRANSIT DRIVES TRANSFORMATION**

**John Manconi**  
General Manager  
Transportation Services Department  
City of Ottawa  
**ULI Fireside Chat Event**



# The Challenge



# The Vision



# The Downtown Transitway



# Reclaiming our Public Spaces



# Mackenzie King Bridge Today



# Planning for Tomorrow



# Rideau Centre

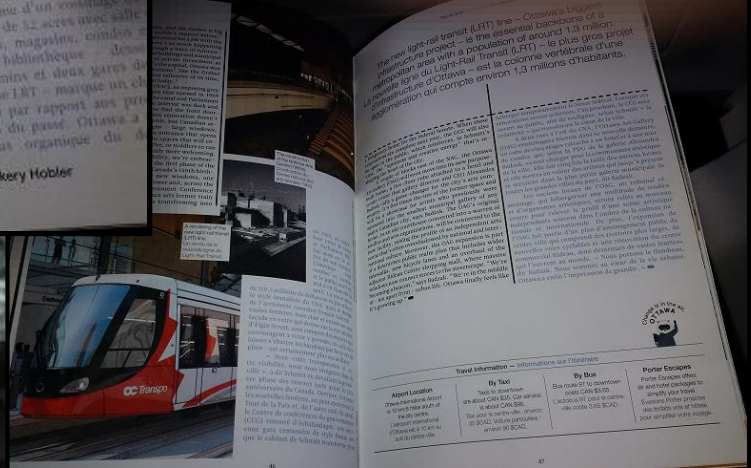
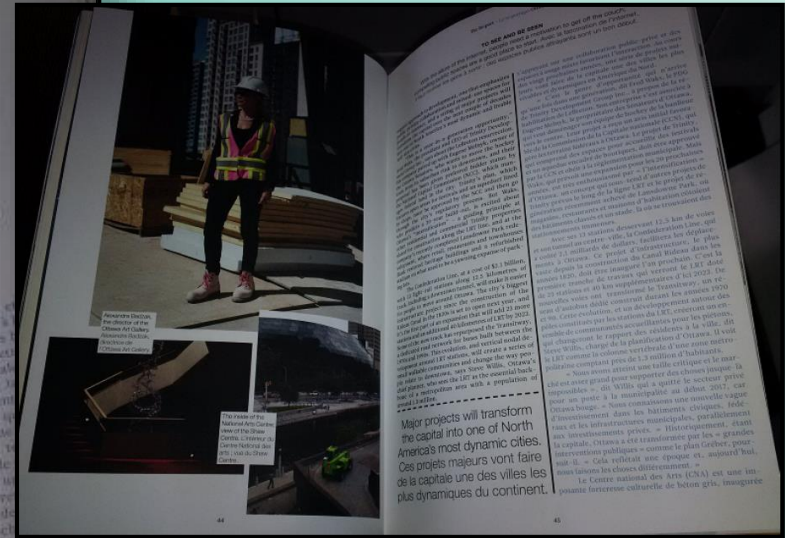
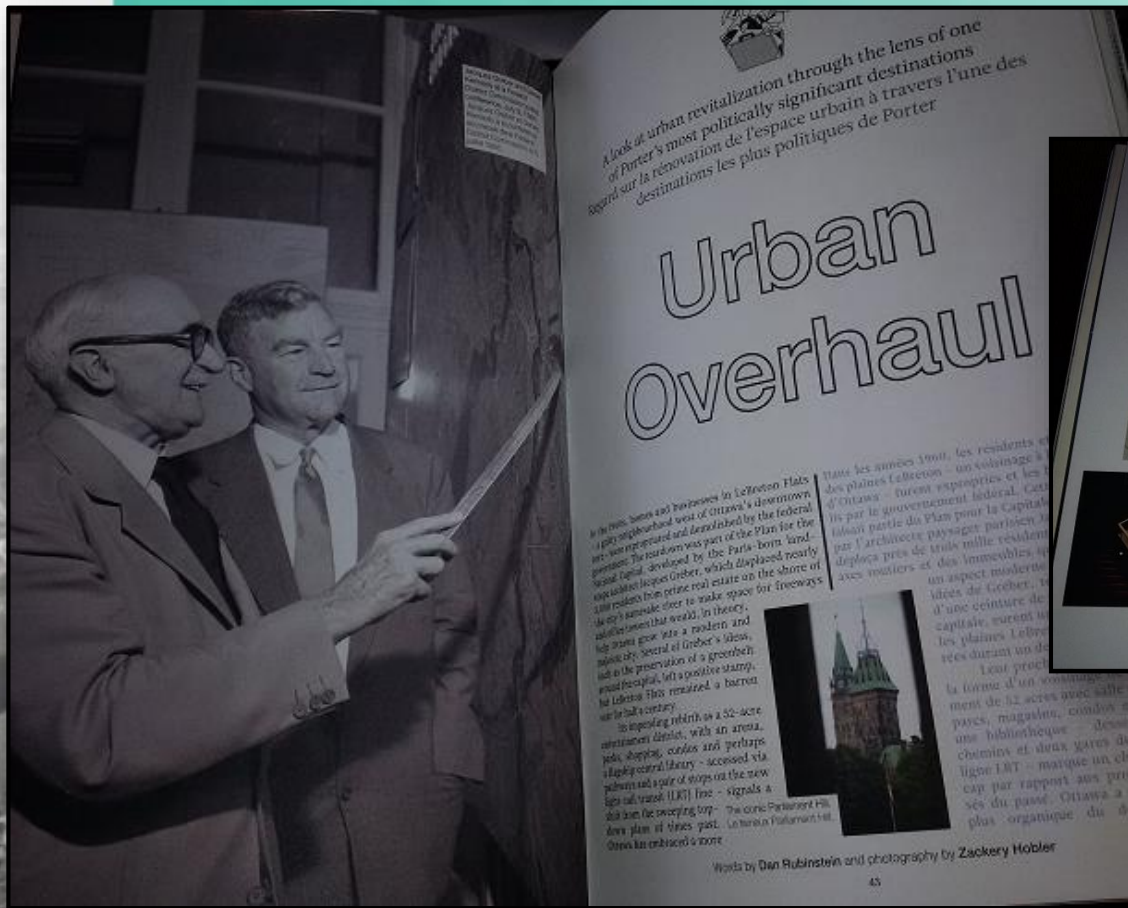




# Rideau Station



**Rideau Station**



# Transforming the Nation's Capital

## *World-Class LRT Network will make Exploring Ottawa even Easier*

Corporate Meetings Network  
September 6, 2017



The City of Ottawa is on track with its ambitious plans to develop a light rail transit (LRT) system within the capital region. In development since spring 2013, the \$2.13 billion transportation initiative, dubbed the O-Train Confederation Line, will see Ottawa's Bus Rapid Transit system replaced with a new, world-class LRT network that will shuttle residents and tourists across the city via 13 stations.

"The Confederation Line will better link communities along its route, leading to enhanced development opportunities and greater ease of movement between neighbourhoods," says Michael Crockatt, President and CEO of Ottawa Tourism. "Our already walkable destination will become even more walkable, and local businesses will benefit from better visibility and street access. On top of that, the LRT will reduce congestion and, as a result, the city's carbon footprint as commuters move from the current bus-only system to LRT."

Certainly, Ottawa's Confederation Line is breaking new ground in a number of ways. In addition to featuring a 2.5km underground tunnel – the largest of its kind in the region – it is the largest infrastructure undertaking in the city's history and the first to be delivered under a P3 scheme.

Notes Crockatt: "The Confederation Line is the biggest development in Ottawa since the building of the Rideau Canal. Its importance for both locals and visitors to the capital region cannot be overstated."



Beyond removing buses from downtown roads, the new system will provide more convenient access to existing transportation services (e.g. VIA Rail and, in the future, the Ottawa International Airport). It will also make it easier for commuters to travel in and around Ottawa's downtown core and its distinct neighbourhoods. Perhaps more alluring for Ottawa guests, however, is the promise of greater connectivity between Ottawa's venues to the many surrounding attractions and amenities. Once open, the LRT will better link hotel guests in the western part of the downtown core to the Shaw Centre and provide convenient transportation to unique off-site destinations and activities, including exclusive restaurants, Ottawa tours, Rideau Canal and Ottawa River boat cruises, Parliament Hill, Canadian War Museum, and more.

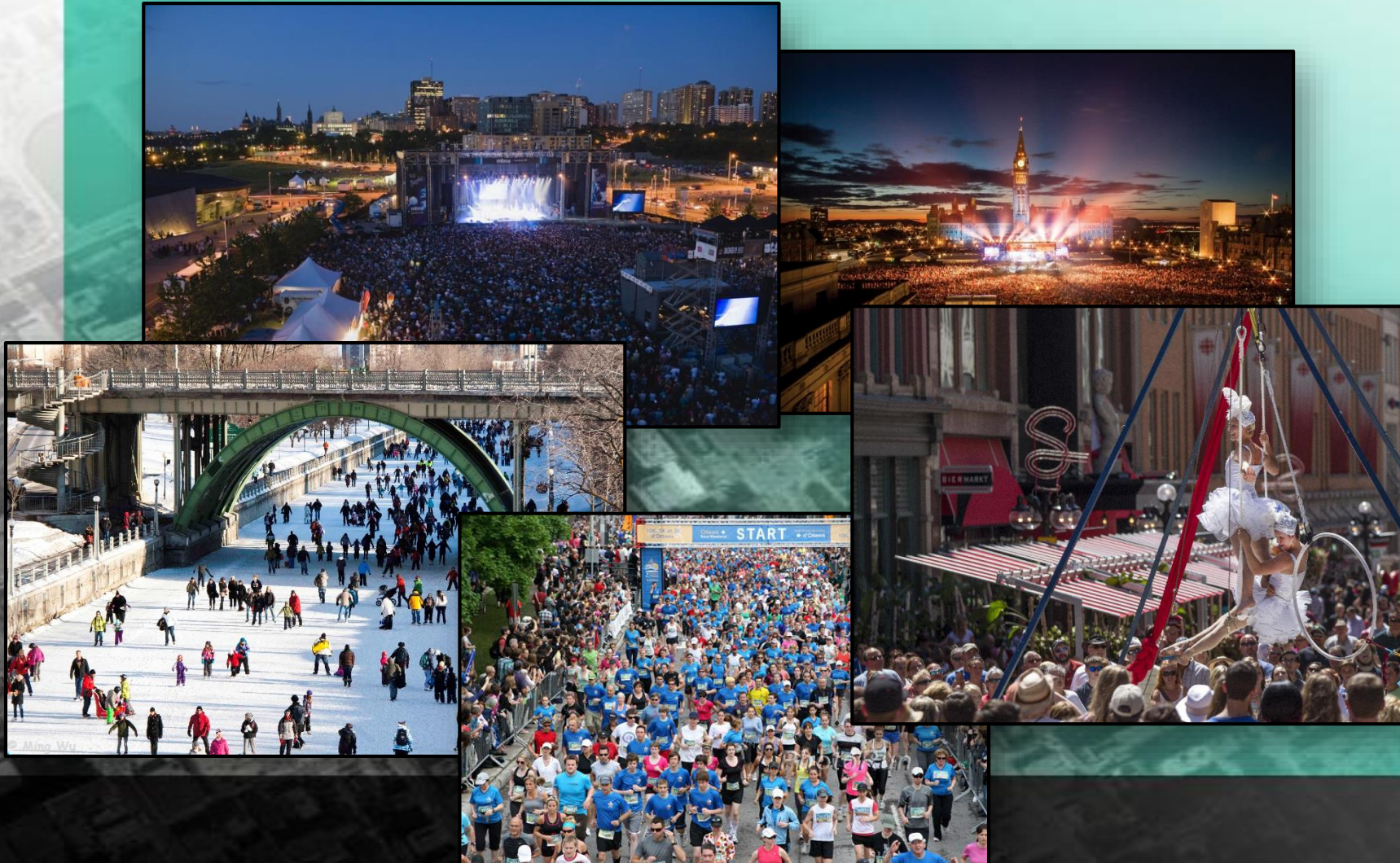
This summer, residents and visitors also had the chance to visit a future underground LRT station with the immersive "Kontinuum" multimedia experience produced as part of Canada's 150th celebrations.



"From a tourism perspective, the new Confederation Line will allow visitors to more easily access Ottawa's attractions such as the Canadian War Museum, or trendy neighbourhoods such as Wellington West," explains Crockatt, noting, "Convention-goers who meet at Shaw Centre will have even more hotels from which to choose—some of which offer convenient access without ever setting foot outside."

Development of the Confederation Line is being carried out by the Rideau Transit Group consortium, which includes the world-class team of ACS Infrastructure Canada, Dragados Canada, EllisDon, and SNC-Lavalin. Much of the construction for the Confederation Line has already been completed, and plans are to open the new LRT system to passengers in 2018.

# Touring Ottawa











# Events and Activities



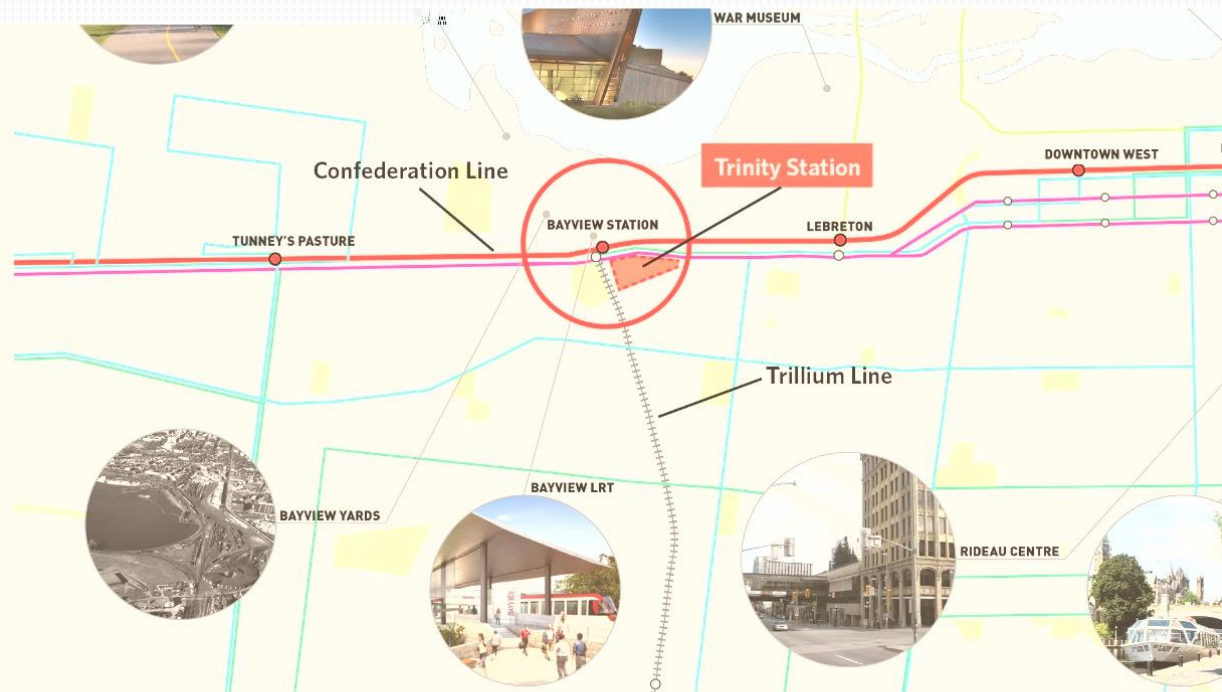
### CONFEDERATION LINE COMMUNITY CONNECTIONS

#### PIMISI

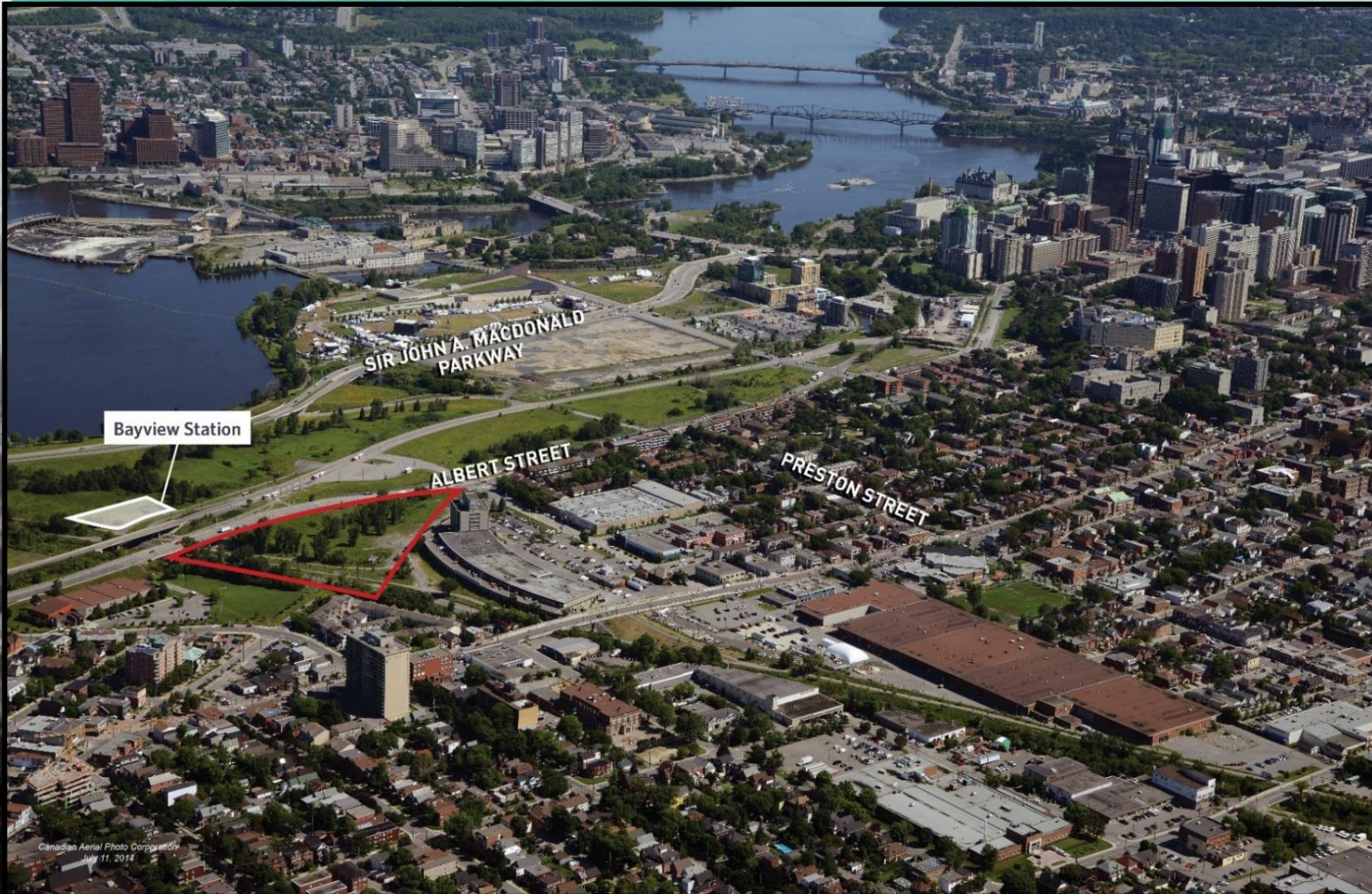
- Pedestrian Path 
- Cycling/Mixed-Use Path 
- Bus Transit 
- Development Area 
- Attraction 
- LRT Tracks 
- Tunnel 
- Platform 



# LeBreton Flats – Pimisi Station



# West to Bayview

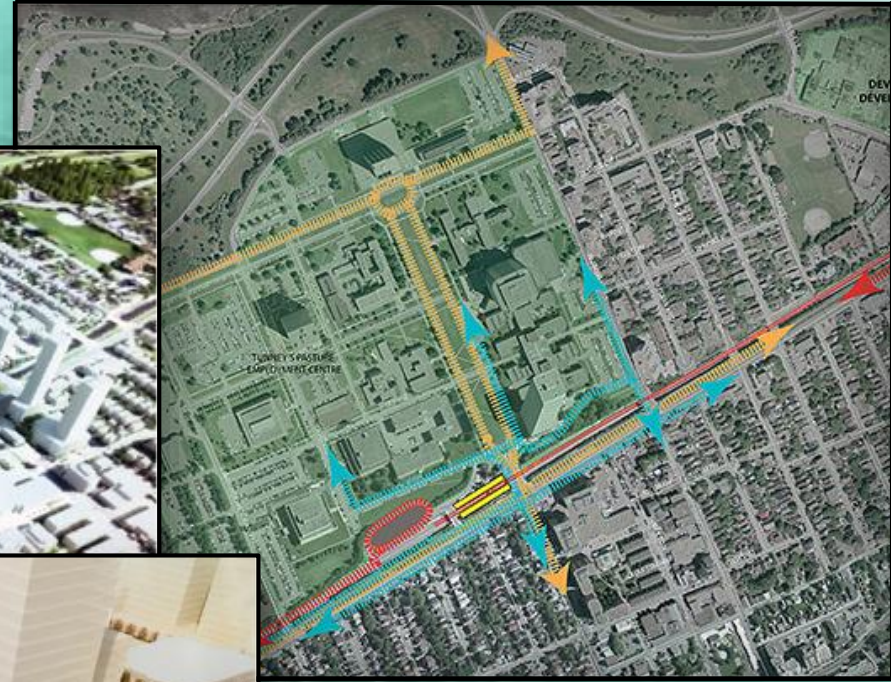


# Trinity Development – Albert Street

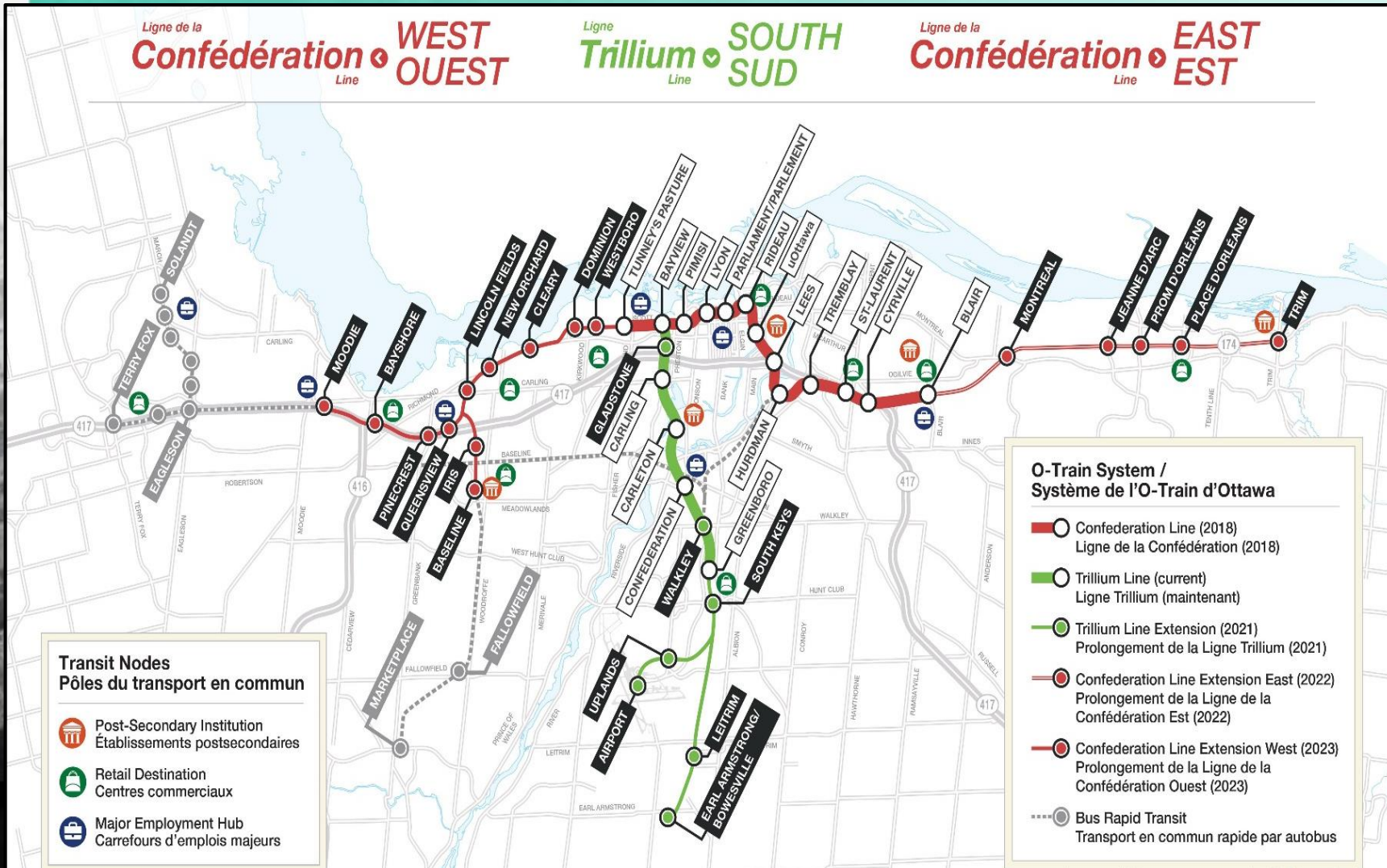




# Trinity Development – Albert Street



# Tunney's Pasture Redevelopment



# West, South and East

# IMPROVED TRILLIUM ALIGNMENT

## HIGHLIGHTS

Adds 800 metres of LRT without additional costs

Uses existing City-owned rail corridor

Extends LRT to edge of urban boundary

Improves access to Riverside South and broader Ottawa south communities

Reduces land impacts and simplifies construction

Reduces environmental impact on sensitive lands


Facilitates potential future extension to Limebank to better integrate with community as it grows



Original CDP concept for LRT in Riverside South



# Connecting to Ottawa's South

- 
- An aerial photograph of Ottawa, Canada, showing a dense urban grid. The image is partially covered by a teal gradient overlay on the right side. A list of bullet points is overlaid on the teal area.
- Building a world class LRT system that encourages sustainable growth and development
  - State of the art LRT technology
  - Encouraging a progressive, active and liveable City with multi-modal transportation options
  - Designing stations with the needs of all users in mind and that showcase Canadian Art and architecture
  - Reclaiming our public spaces for residents and visitors to the Nation's Capital

## Changing Ottawa's Urban Landscape